

## INSTALLATION

### 1. PRECAUTION

#### CAUTION:

Read "PRECAUTION" thoroughly before servicing (See page RS-1).

### 2. INSTALL CENTER AIRBAG SENSOR ASSEMBLY

- Check that the ignition switch is turned to OFF.
- Check that the negative (-) battery terminal is disconnected.

#### NOTICE:

After disconnecting the negative battery terminal, wait for at least 90 seconds before starting the operation.

- Temporarily install the center airbag sensor assembly with the 3 bolts.

#### NOTICE:

- If the center airbag sensor assembly has been dropped, or there are any cracks, dents or other defects in the case, bracket or connector, replace it with a new one.
- When installing the center airbag sensor assembly, make sure that the SRS wiring does not interfere with any other parts and that it is not pinched between other parts.

- Tighten the 3 bolts to the specified torque.  
**Torque: 17.5 N\*m (179 kgf\*cm, 13 ft.\*lbf)**
- Check that there is no looseness in the installation parts of the center airbag sensor assembly.
- Connect the holder (with connectors) to the center airbag sensor assembly.
- Check that the water-proof sheet is properly set.

### 3. INSTALL INSTRUMENT LOWER COVER SUB-ASSEMBLY (See page IP-30)

### 4. INSTALL CONSOLE UPPER PANEL NO.1 GARNISH (See page IP-31)

### 5. INSTALL FRONT CONSOLE BOX (See page IP-31)

### 6. INSTALL BOX BOTTOM MAT (See page IP-31)

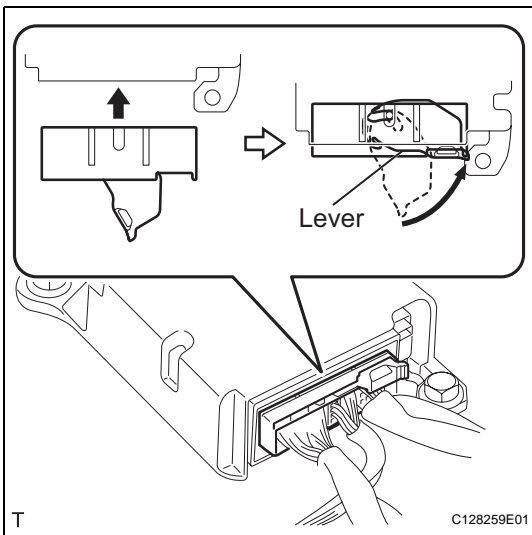
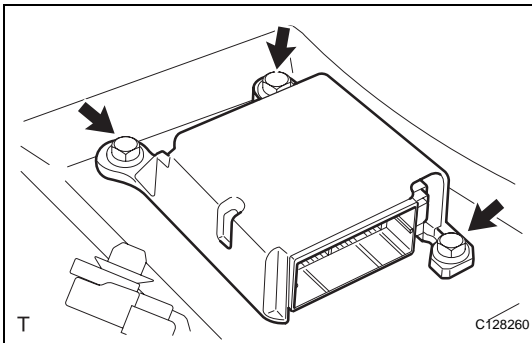
### 7. INSTALL CONSOLE UPPER REAR PANEL SUB-ASSEMBLY (See page IP-31)

### 8. INSTALL PARKING BRAKE HOLE COVER SUB-ASSEMBLY (See page IP-32)

### 9. INSTALL SHIFT LEVER KNOB SUB-ASSEMBLY (for Manual Transaxle) (See page IP-32)

### 10. INSTALL SHIFT LEVER KNOB SUB-ASSEMBLY (for 4WD) (See page IP-32)

### 11. INSTALL INTEGRATION CONTROL AND PANEL ASSEMBLY (See page IP-32)



12. **INSTALL INSTRUMENT PANEL GARNISH RH (See page [IP-33](#))**
13. **INSTALL INSTRUMENT PANEL GARNISH LH (See page [IR-43](#))**
14. **CONNECT CABLE TO NEGATIVE BATTERY TERMINAL**  
**Torque: 3.9 N\*m (40 kgf\*cm, 35 in.\*lbf)**
15. **PERFORM INITIALIZATION**
  - (a) Perform initialization (See page [IN-31](#)).  
HINT:  
Some systems need initialization after reconnecting the cable to the negative battery terminal.
16. **INSPECT SRS WARNING LIGHT**
  - (a) Inspect the SRS warning light (See page [RS-29](#)).